



# the IWFS Grapevine

IWFS INTERNATIONAL NEWS SEPTEMBER 2013

## NEW BRANCHES



### ORLANDO, FLORIDA

Our newest Branch in the Americas, Orlando (Florida), received its Provisional Branch Charter earlier this year. To mark the occasion, founding President Michael Vestal and Vice-President Nicholas Carbone celebrated with members at Francesco's Ristorante in Maitland, Florida. Originally from Palermo, Sicily, and well-known throughout Central Florida for his excellent Italian cuisine, chef/owner Francesco Aiello created a wonderful meal. Congratulations to all!



### ROPPONGI, TOKYO

IWFS Asia Pacific welcomes its third branch in Tokyo – IWFS Roppongi. Under the leadership of Mr Akihito Tanaka, the Roppongi Branch opened on June 20 2013 with an inaugural dinner at 'No Bird' in Ginza. APZ Chair Yvonne Wallis will join the branch soon in Tokyo for a celebratory dinner with its 15 founding members.



## OUR FESTIVALS

### KUALA LUMPUR FESTIVAL

Under the leadership of Festival Organiser Jeremy Diamond, Asia Pacific held a very special regional festival in Kuala Lumpur in June/July 2013, with 100 IWFS members from all three zones. We visited some fabulous restaurants showing both local and international food, enjoyed some local sight-seeing in KL and took a couple of day trips to regional areas including Putrajaya and Malacca. Some wonderful traditional dancing displays were also arranged.

Wine Master Rajan Karunakaran delighted guests with some excellent wines from France, Italy, Australia, New Zealand, Austria, California, Spain, Chile and Argentina. Perhaps the highlight was the final evening when Kalsom Diamond got everyone onto the dance floor with her rendition of 'I will survive'. Wow – our members can certainly dance. For photos click [here](#).



## OUR AWARDS

### ANDRÉ SIMON GOLD

On July 27 IWFS Treasurer, Robert Gutenstein, celebrated his 80th birthday with a wonderful party in Manhattan. What an excellent opportunity to recognise Bob's dedicated, long standing and distinguished service to IWFS. Bob was presented with the André Simon Gold Medal that evening in front of family, friends and many of his IWFS colleagues. Richly deserved Bob!





## MESSAGE FROM THE CHAIRMAN

Welcome to the second edition of the Grapevine. I hope you enjoyed our first edition and will also enjoy this one. It will be issued quarterly so that you can keep up to date with our IWFS news.

Over 100 members worldwide will gather soon in London to celebrate the Society's 80th Anniversary. What a milestone. We will also commemorate the life and contribution of our past Honorary President, John Avery MW, with a dinner at Vintners' Hall.



Don't forget to take a look at the IWFS Blog. Every week our Honorary President, Sid Cross, presents his thoughts on a new wine or food topic and invites member comments. Click [here](#) to be a part of it.

The IWFS Travel Tips is now available on the website. Please support this initiative. The aim is to give members up to date information on where to eat, drink, stay and visit when they are travelling. Help us get started by clicking [here](#) and giving us your recommendations.

Hoping to see many of you at an upcoming festival in London, Mexico, Greece, France or Taiwan.

Warmest wishes to you all.

Yvonne Wallis, Chair – IWFS Council of Management.

## NEW VINTAGE CARD

This year's card (and your membership card) has been expanded to include more regions. It now has four drops rather than three. New regions include South West France, English Sparkling Wine, Clare Valley and Tasmania in Australia and Martinborough in New Zealand (and more). These cards continue to be popular with members to include as an ideal 'thank you' or small gift, particularly during the festive season to include with your cards. Pricing for 12 cards is £24.00 (quantity discounts available) and can be seen on the members only pages of the website. If you wish to place an order please email Andrea Warren [here](#). Orders will be despatched by end of October.

## IWFS WINES COMMITTEE

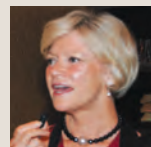
The IWFS Wines Committee meets annually to run through the updated vintage assessments from our team of expert consultants around the world. This year the wines committee was pleased to welcome Charles Taylor MW. Charles is the Managing Director of Charles Taylor Wines, a leading agent based in London for some of the top wines from Burgundy, Rhone and Champagne, so he qualifies well for the team.

*Photographed here (l to r) Michael Brajkovich MW (NZ), Liz Robertson MW (UK), Chris Bonsall (UK), Gregory Bowden (UK) and Charles Taylor MW (UK).*

*Committee members not included - Beverley Blanning MW (UK) and Harriet Lembeck (US).*

## IWFS Council of Management

### EXECUTIVE COMMITTEE



**CHAIRMAN:**  
Yvonne Wallis  
(Victoria, Australia)



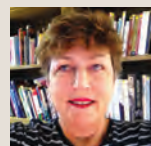
**SECRETARY/TREASURER:**  
Bob Gutenstein  
(New York, USA)



**COUNCIL MEMBER:**  
Dave Felton  
(Pasadena, USA)



**COUNCIL MEMBER:**  
Andrew Jones  
(Cayman Islands)



**COUNCIL MEMBER:**  
Shirley Kilian  
(Cape Town, South Africa)



**COUNCIL MEMBER:**  
Michael Messent  
(Wessex, UK)



**HONORARY PRESIDENT:**  
Sid Cross  
(Vancouver, Canada)



**INTERNATIONAL SECRETARIAT:**  
Andrea Warren  
(London, UK)







## ZONE NEWS

### AMERICAS



**CHAIR:** Dave Felton

The Americas' branches and its members are embarking on their journeys into our Autumn season. For so many of us in the northern hemisphere, the change from summer's heat to cooler, crisper days also brings out old favorite colder weather recipes and a different mood for pairing wines. Enjoy the wide variety of event creativity from the Americas' branches by visiting the Society website at [www.iwfs.org](http://www.iwfs.org)

### ASIA PACIFIC



**CHAIR:** Yvonne Wallis

The Asia Pacific region is delighted to announce its 23rd branch, IWFS Roppongi. We now have three branches for members to visit in Tokyo. We are also delighted to be opening a second branch in Thailand, at the end of November, this time on the beautiful resort island of Phuket. What fabulous locations. Both Japan and Thailand feature in the recently announced listing of 'Asia's 50 Best Restaurants 2013', taking the top 3 places.

### EUROPE AFRICA



**CHAIR:** John Legg

Liverpool Branch has received their full Charter and has 50+ members - congratulations. Also exciting is the prospect of inaugural meetings for the Munster Branch in Cork (Ireland) which will be just after the November events in London. Before all that some 40 members will have spent 2/3 days in Norfolk and in the New Year the action moves to Yorkshire for a 'Best of British' mid-week break highlighting the local forced rhubarb and other goodies.

## LONDON NOVEMBER 2013



Two parallel lunches will be held to celebrate the Society's 80th Anniversary on November 13, both at Roux restaurants, 'Roux at Landau' and 'Roux at Parliament Square'. They will each be working to the same exacting standard and feature outstanding wines.

If you have not already booked, you may still be in with a chance to join the lunch at 'Roux at Parliament Square' and be part of this very special experience. There are just a few places remaining. Chef Steve Groves won BBC's 'MasterChef: The Professionals' in 2009 and works closely with Michel Roux Jr.

The cost is £110 pp. and the reception will be at 12.30 pm. Booking details are to be found on the IWFS website by clicking [here](#), or email John Nicholas by clicking [here](#).

## DATES FOR YOUR DIARY



### LONDON

12 – 13 November 2013

We will soon be celebrating the Society's 80th Anniversary and holding a Memorial Dinner for our late President John Avery MW in London. Limited places are still available at the 80th Anniversary lunch at Roux at Parliament Square – see more details on this page in separate feature or click [here](#) for details.

### MEXICO – PUERTO VALLARTA

17 – 20 November 2013

A Great Escape to beautiful Puerto Vallarta – open to all members. To find out if any of the last few places are still available please click [here](#) or email Christy Marsh to confirm your interest by clicking [here](#).

### YORKSHIRE – ENGLAND

18 - 21 February 2014

A luxury "Best of British" break in Yorkshire, coinciding with the 'Wakefield Rhubarb Festival'. Experience some of the best hospitality the region has to offer. Open to all members. Please click [here](#) for details of this wonderful program on the IWFS website.

### SANTORINI (GREECE)

6 – 11 May 2014

This is now booked out but you are welcome to join the waitlist. Click [here](#) for details.

### RHONE RIVER CRUISE (FRANCE)

8 – 15 June 2014

A few places have become available on this magical journey along the Rhone sailing through the heart of Burgundy & Provence. For the itinerary, to view cabin selection and register online, visit the IWFS website by clicking [here](#). Otherwise, please email Steve Hipple by clicking [here](#).

### TAIPEI (TAIWAN R.O.C.)

14 – 16 November 2014

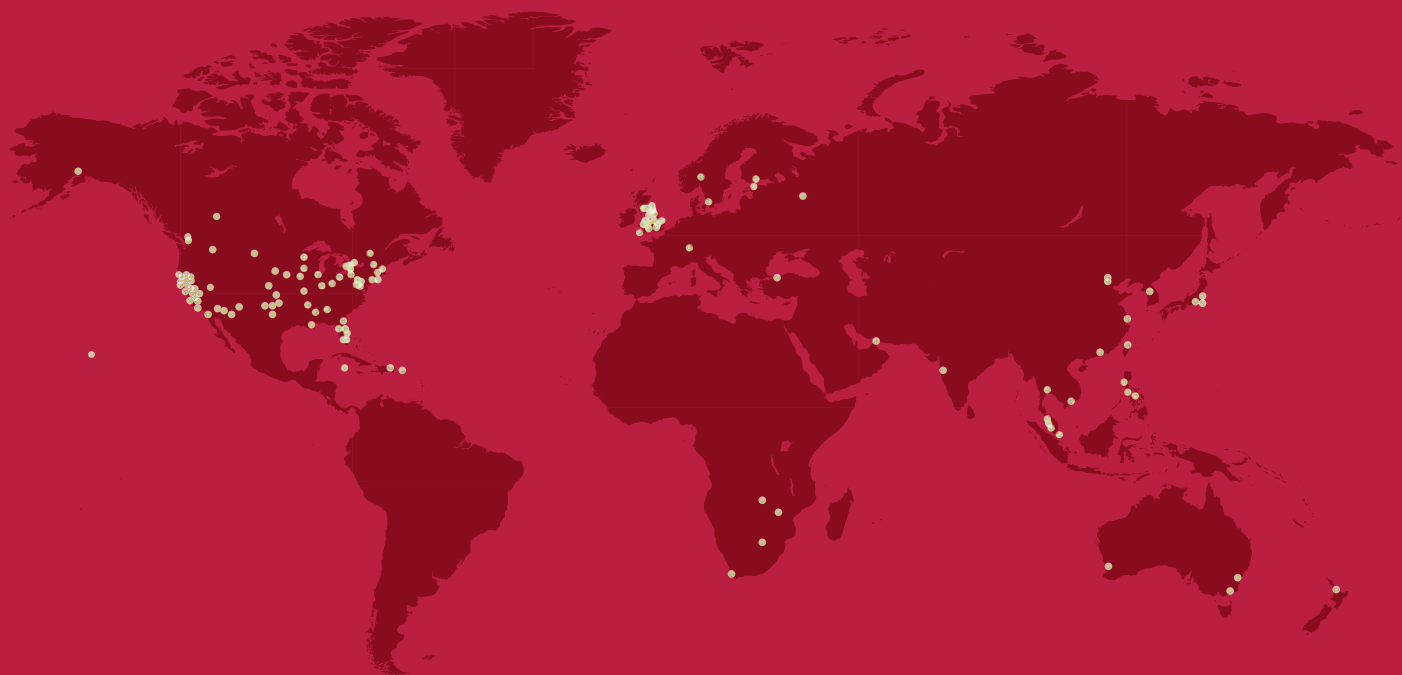
Asia Pacific AGM Weekend – Open to all members, but priority is given to APZ members. Bookings will not open until mid-2014, but please save the date. Our Taipei Branch is planning a wonderful weekend for us.

### MELBOURNE (AUSTRALIA)

11 – 15 November 2015

The next International Festival will be held in Melbourne with several pre and post tours. To see some preliminary details please click [here](#).

## OUR IWFS BRANCHES



### 131 BRANCHES WORLDWIDE

#### AMERICAS (78)

##### CANADA

ALBERTA - EDMONTON

##### BRITISH COLUMBIA

VANCOUVER  
VICTORIA (BC)

##### ONTARIO

KITCHENER-WATERLOO  
NIAGARA  
OAKVILLE  
TORONTO

QUEBEC - MONTREAL

CAYMAN ISLANDS - CAYMAN ISLANDS

DOMINICAN REPUBLIC - DOMINICAN REPUBLIC

MEXICO - TIJUANA

PUERTO RICO - PUERTO RICO

##### UNITED STATES OF AMERICA

ALABAMA - BIRMINGHAM

ALASKA - ANCHORAGE

##### ARIZONA

PARADISE VALLEY  
PHOENIX  
TUCSON

##### CALIFORNIA

CHULA VISTA  
COACHELLA VALLEY  
EAST BAY  
HOLLYWOOD  
LA JOLLA  
LAGUNA BEACH  
LOS ANGELES  
MARIN COUNTY  
MONTEREY PENINSULA  
NAPA VALLEY  
ORANGE COUNTY  
PASADENA  
PHYSICIANS OF LOS ANGELES  
RANCHO SANTA FE  
RIVERSIDE  
SACRAMENTO-SAN JOAQUIN  
SAN FERNANDO VALLEY

SAN FRANCISCO  
SANTA BARBARA  
SOUTHERN CALIFORNIA

##### FLORIDA

JACKSONVILLE  
MIAMI  
NAPLES  
ORLANDO  
PALM BEACH  
TAMPA BAY

GEORGIA - ATLANTA

HAWAII - HONOLULU

ILLINOIS - CHICAGO

INDIANA - INDIANAPOLIS

IOWA - COUNCIL BLUFFS

LOUISIANA - NEW ORLEANS

MARYLAND - BALTIMORE

##### MASSACHUSETTS

BOSTON  
CENTRAL MASSACHUSETTS

##### MINNESOTA

MINNEAPOLIS/ST PAUL  
ROCHESTER

MISSOURI - KANSAS CITY

MONTANA - BOZEMAN

##### NEBRASKA

GREATER OMAHA  
NORFOLK  
OMAHA

NEVADA - LAKE TAHOE

NEW HAMPSHIRE - NASHUA

NEW MEXICO - SANTA FE

##### NEW YORK

BUFFALO  
LONG ISLAND  
NEW YORK

##### OHIO

CLEVELAND  
COLUMBUS

OKLAHOMA - OKLAHOMA CENTRAL

PENNSYLVANIA

PHILADELPHIA  
YORK

SOUTH CAROLINA - AIKEN

TENNESSEE - MEMPHIS

##### TEXAS

AUSTIN  
FORT WORTH  
HOUSTON  
NORTHEAST TEXAS

WASHINGTON - SPOKANE

WASHINGTON DC - WASHINGTON DC

#### ASIA PACIFIC (23)

##### AUSTRALIA

NEW SOUTH WALES  
VICTORIA  
WESTERN AUSTRALIA

##### CHINA

BEIJING CITY  
CHAOYANG DISTRICT (BEIJING)  
SHANGHAI

HONG KONG - HONG KONG ISLAND

INDIA - BOMBAY

##### JAPAN

ROPPONGI  
TOKYO  
TOKYO BAY

##### MALAYSIA

IPOH  
KUALA LUMPUR  
PENANG

NEW ZEALAND - AUCKLAND

##### PHILIPPINES

CEBU  
MANILA LADIES  
PHILIPPINES

SINGAPORE - TANGLIN

SOUTH KOREA - SEOUL

TAIWAN R.O.C. - TAIPEI

THAILAND - BANGKOK

VIETNAM - SAIGON

#### EUROPE / AFRICA (30)

ESTONIA - ESTONIA (TALLINN)

FINLAND - HELSINKI

NORWAY - OSLO

RUSSIA - MOSCOW

##### SOUTH AFRICA

CAPE TOWN  
JOHANNESBURG

SWEDEN - MALMÖ

SWITZERLAND - ZURICH

TURKEY - ISTANBUL

UNITED ARAB EMIRATES - DUBAI

##### UNITED KINGDOM

BATH & BRISTOL  
BERKSHIRE  
BLACKPOOL & FYLDE COAST  
CAPITAL  
DEVONSHIRE  
HEREFORDSHIRE & MONMOUTHSHIRE  
LEICESTER  
LIVERPOOL  
LONDON  
MANCHESTER  
MERSEYSIDE & MID-CHESHIRE  
NORTHAMPTON  
NORTHERN DALES  
ST JAMES'S (LONDON)  
SURREY HILLS  
SUSSEX  
WESSEX  
WEST YORKSHIRE

ZAMBIA - LUSAKA

ZIMBABWE - HARARE

**GO TO [WWW.IWFS.ORG](http://WWW.IWFS.ORG)  
FOR MORE INFORMATION  
OR TO CONTACT A BRANCH**



#### INTERNATIONAL WINE & FOOD SOCIETY

International Secretariat  
Andrea Warren  
[sec@iwfs.org](mailto:sec@iwfs.org)

Americas  
Christy Marsh  
[pegleg47@aol.com](mailto:pegleg47@aol.com)

Asia Pacific  
Claire Hamilton  
[apz@iwfs.org](mailto:apz@iwfs.org)

Europe & Africa  
Katie Wilkins  
[eacmembership@talktalk.net](mailto:eacmembership@talktalk.net)

